

# Master Measuring Mass in Kilograms B

## Rationale

In this step, pupils build upon the practical element of the previous step to record their understanding. They will use the same vocabulary and concepts as they did practically, to state the mass of given objects in pictorial form. Drawing on their work on reading scales, they will state measurements exactly and to the nearest kilogram.

They will continue to use the abbreviation 'kg' to record mass in kilograms.



## Key Stem Sentences

- The mass of the \_\_\_ is exactly \_\_\_kg.
- The mass of the \_\_\_ is \_\_\_kg to the nearest kilogram.
- An estimation for the mass of the \_\_\_ is \_\_\_kg.



## Key Vocabulary

- mass / weighs
- kilogram / kg
- exactly / estimation
- to the nearest kilogram



## Common Errors or Misconceptions

- Pupils may misread the scale.
- Pupils may find it difficult to identify the nearest kilogram, especially when rounding down.

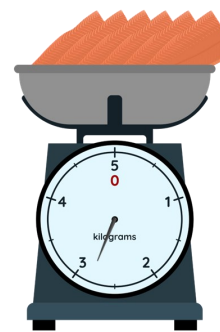


## Key Representations

### Kilogram Scales

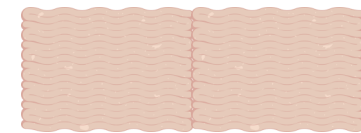
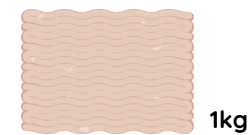


The mass of the beef is exactly 1kg.



The mass of the salmon fillets is 3kg to the nearest kilogram.

### Objects with given weight (to use a benchmark)



An estimation for the mass of the turkey mince is 2kg.



## Pupils will FLOURISH if they can...

- accurately record mass to exact measurements and to the nearest kilogram.
- record mass using the abbreviation 'kg'.
- make appropriate estimates of mass in kilograms.
- explain their understanding using written sentences and mathematical proof.

